

인천아트플랫폼 다목적공연장

무대조명장치

2009.06


인천아트플랫폼
무대조명장치

REVISION

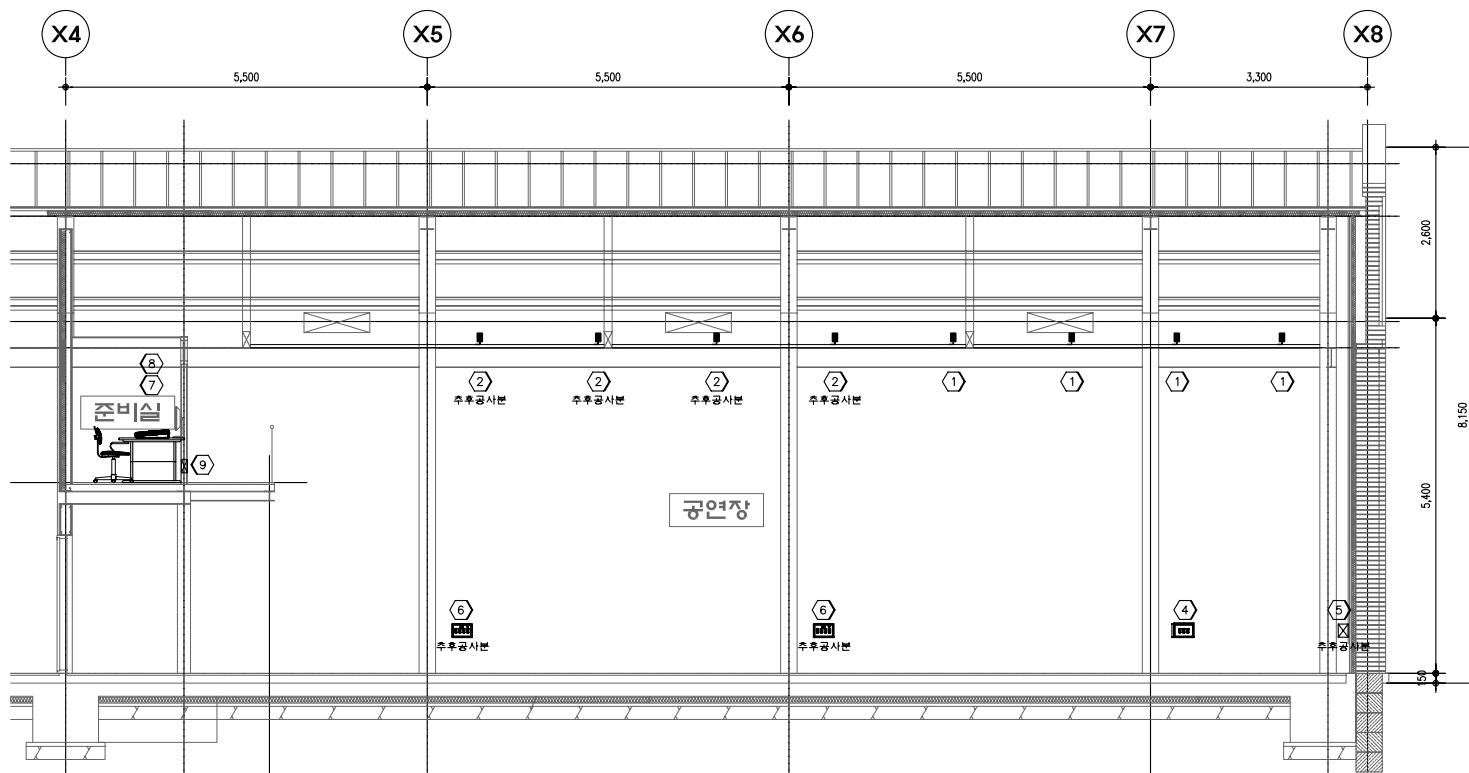
DRAWN BY	_____
MECH:	_____
LIGHT:	_____
SOUND:	_____
ELEC:	_____
CHECKED BY	_____
DESIGNED BY	_____
APPROVED BY	_____

무대장치 리스트

DRAWING NO HAN - L - 001



1/40(A1)



1
A 000 공연장 무대장치 단면도
1/40(A1)

NO	DESCRIPTION	SPECIFICATION	QUANTITY	PATCH	CIRCUIT				CAPACITY (KVA)		REMARKS
					DIMMING	REMOTE DIRECT	DIRECT	DMX	MACHINE	LIGHT	
1	NO.1~4 LIGHT FLY DUCT	C-TYPE 30A x 18 OUTLET L=8,000L	4 SET	DIM1:3	24					48.0	DIM 6
2	NO.5~8 LIGHT FLY DUCT(추후공사분)	C-TYPE 30A x 21 OUTLET L=8,000L	4 SET	DIM1:3 RD1:3	24(추후)	4(추후)		2(추후)		(56.0)	DIM 6, RD 1
3	NO.1~4 SIDE FLYDUCT(추후공사분)	C-TYPE 30A x 15 OUTLET L=5,000L	2 SET	DIM1:2 RD1:3	24(추후)	4(추후)				(56.0)	DIM 6, RD 1
4	NO.1~2 WALL POCKET	C-TYPE 30A x 3 OUTLET	2 SET	DIM1:1	6					12.0	DIM 3
5	NO.3~4 WALL POCKET(추후공사분)	C-TYPE 30A x 4 OUTLET / XLR	2 SET	DIM1:1 RD1:1	6(추후)	2(추후)		2(추후)		(16.0)	DIM 3, RD 1
6	NO.5~8 WALL POCKET(추후공사분)	C-TYPE 30A x 4 OUTLET	4 SET	DIM1:1 RD1:1	12(추후)	4(추후)				(32.0)	DIM 3, RD 1
7	MULTI NETWORK SYSTEM(추후공사분)	DMX SPLITTER 1IN 6OUT x 1set	1 SET								
8	LIGHT COMPUTER CONSOLE	INNOVATOR 24/48	1 SET								
9	CONNECTOR BOX		1 SET								
10	MAIN PANEL(기존사용)	100AF / 100AT	1 RACK								
11	MAIN & RD PANEL(추후공사분)	RD14	1 RACK								
12	DIMMER UNIT RACK	148E (DIMMER 5KW x 30CIR)	1 RACK								

PROJECT TITLE
인천아트플랫폼
무대조명장치

NOTES

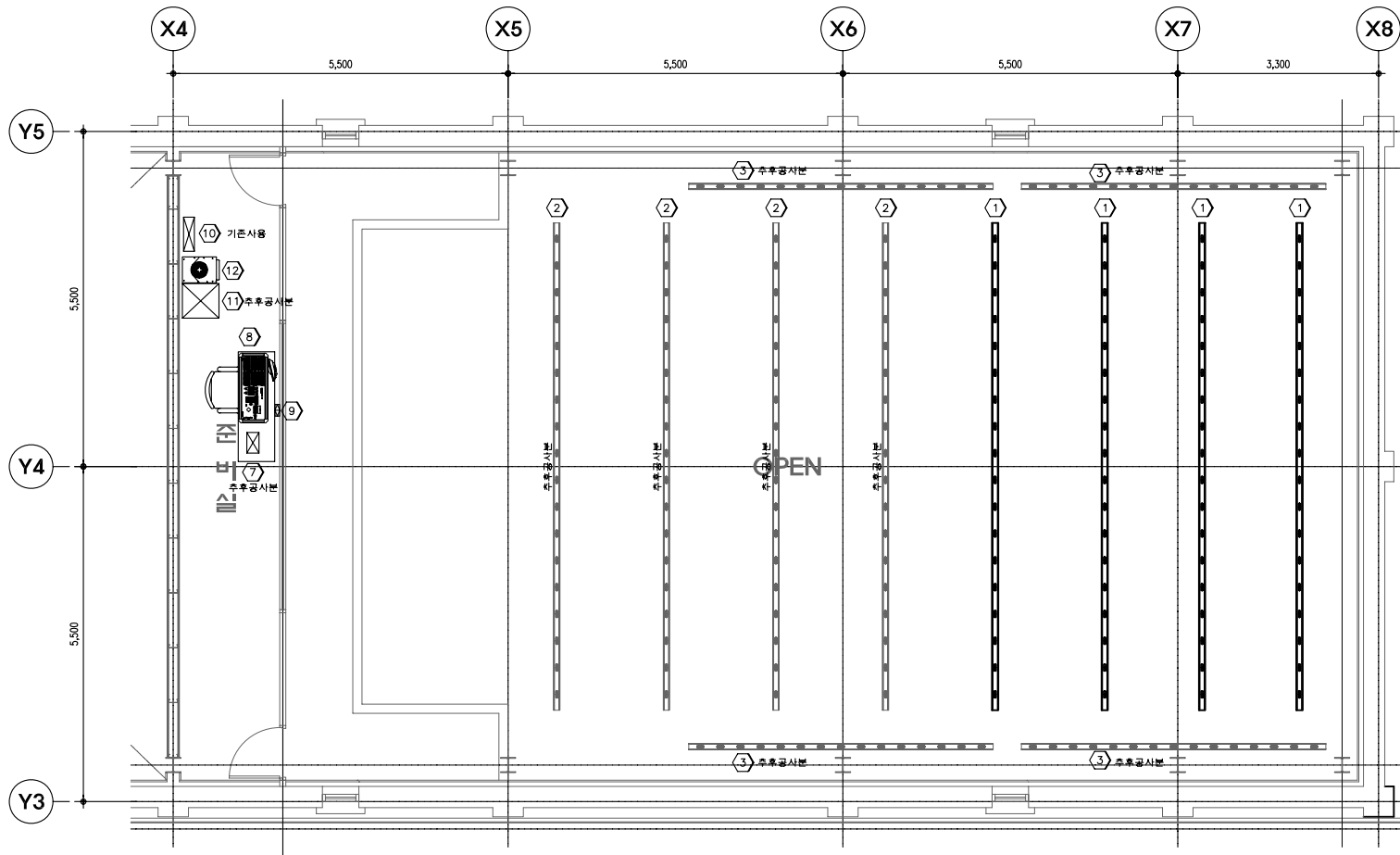
REVISION

DRAWN BY
MECH:
LIGHT:
SOUND:
ELEC:
CHECKED BY
DESIGNED BY
APPROVED BY

NAME OF DRAWING
공연장 무대장치 단면도

SCALE 1 / 40 DATE 2009. 05.

DRAWING NO HAN - L - 002
SHEET NO



1 공연장 무대장치 2층 평면도
A 000 1/40(A1)

NO	DESCRIPTION	SPECIFICATION	QUANTITY	PATCH	CIRCUIT				CAPACITY (KVA)		REMARKS
					DIMMING	REMOTE DIRECT	DIRECT	DMX	MACHINE	LIGHT	
1	NO.1~4 LIGHT FLY DUCT	C-TYPE 30A x 18 OUTLET L=8,000L	4 SET	DIM1:3	24					48.0	DIM 6
2	NO.5~8 LIGHT FLY DUCT(추후공사분)	C-TYPE 30A x 21 OUTLET L=8,000L	4 SET	DIM1:3 RD1:3	24(추후)	4(추후)		2(추후)		(56.0)	DIM 6, RD 1
3	NO.1~4 SIDE FLYDUCT(추후공사분)	C-TYPE 30A x 15 OUTLET L=5,000L	2 SET	DIM1:2 RD1:3	24(추후)	4(추후)				(56.0)	DIM 6, RD 1
7	MULTI NETWORK SYSTEM(추후공사분)	DMX SPLITTER 1IN 6OUT x 1set	1 SET		6						
8	LIGHT COMPUTER CONSOLE	INNOVATOR 24/48	1 SET								
9	CONNECTOR BOX		1 SET								
10	MAIN PANEL(기존사용)	100AF / 100AT	1 RACK								
11	MAIN & RD PANEL(추후공사분)	RD14	1 RACK								
12	DIMMER UNIT RACK	I48E (DIMMER 5KW x 30CIR)	1 RACK								

PROJECT TITLE

인천아트플랫폼
무대조명장치

NOTES

REVISION

DRAWN BY

MECH:

LIGHT:

SOUND:

ELEC:

CHECKED BY

DESIGNED BY

APPROVED BY

NAME OF DRAWING

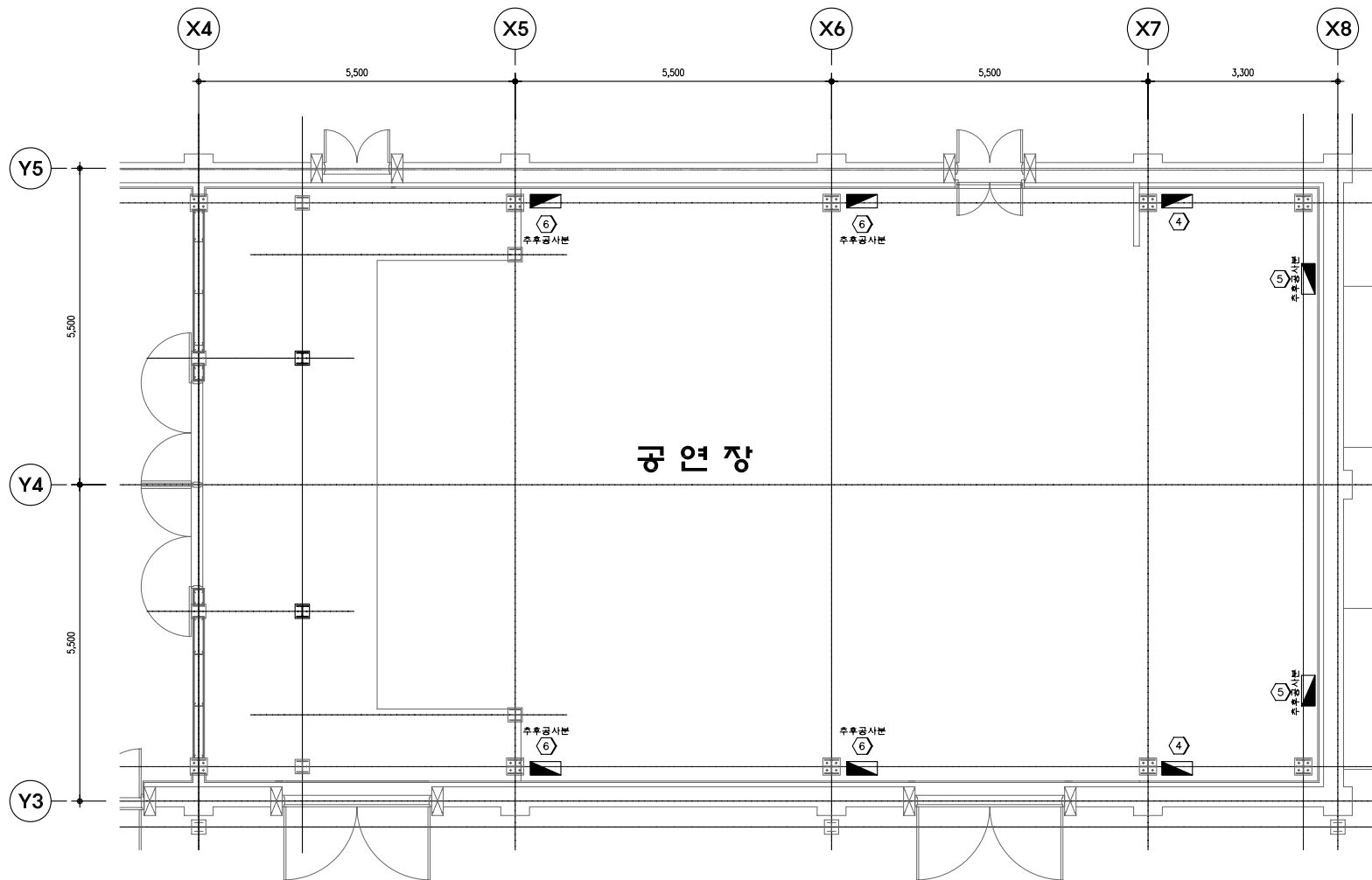
공연장 무대장치
2층 평면도

SCALE 1 / 40

DATE 2009. 05.

DRAWING NO HAN - L - 003

SHEET NO



1
A 000
공연장 무대장치 1층 평면도
1/40(A1)

NO	DESCRIPTION	SPECIFICATION	QUANTITY	PATCH	CIRCUIT				CAPACITY (KVA)		REMARKS
					DIMMING	REMOTE DIRECT	DIRECT	DMX	MACHINE	LIGHT	
[4]	NO.1~2 WALL POCKET	C-TYPE 30A x 3 OUTLET	2 SET	DIM1:1	6					12.0	DIM 3
[5]	NO.3~4 WALL POCKET(후후공사분)	C-TYPE 30A x 4 OUTLET / XLR	2 SET	DIM1:1 RD1:1	6(후후)	2(후후)		2(후후)		(16.0)	DIM 3, RD 1
[6]	NO.5~8 WALL POCKET(후후공사분)	C-TYPE 30A x 4 OUTLET	4 SET	DIM1:1 RD1:1	12(후후)	4(후후)				(32.0)	DIM 3, RD 1

PROJECT TITLE
인천아트플랫폼
무대조명장치

NOTES

REVISION

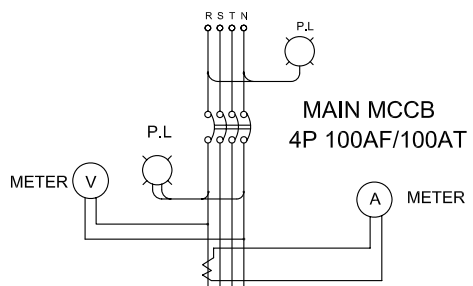
DRAWN BY
MECH:
LIGHT:
SOUND:
ELEC:
CHECKED BY
DESIGNED BY
APPROVED BY

NAME OF DRAWING
공연장 무대장치
1층 평면도
SCALE 1 / 40 DATE 2009. 05.

DRAWING NO HAN - L - 004
SHEET NO

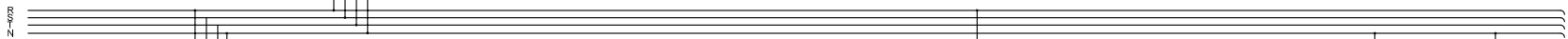
무대조명 1차 간선용량 169.6KW

3Ø 4W 380V/220V



* NOTE *

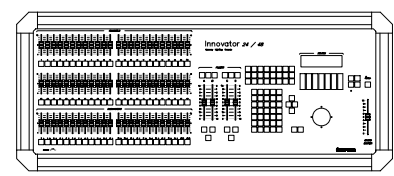
* 무대조명 1차 전원 간선 공사분(결선포함) 일반 전기공사분 *



OPERATION MCCB
3P 30AF / 20AT

CPU MODULE

LIGHT COMPUTER CONSOLE
INNOVATOR 24/48



DIM 1

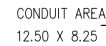
DIMMER UNIT 30CIR

30

DIM 1

(LIGHT)

DIM 30



TOP VIEW



OUTSIDE VIEW



DUAL 5kW _____
DIMMER MODULES

RACK CONTROL MODULE
MODEL 4-0311E

BLANK COVER

CONDUIT AREA
12.50 X 8.25

INSIDE VIEW



SIDE VIEW

i SERIES e
SECTION 1 OF 1

MODEL NO. 4-0112E DWG. NO.:

SECTION INPUT: 800A, 120/208V, 3ø, 4-WIRE, 60Hz.

SHORT CIRCUIT CURRENT RATING: 100,000 RMS SYM @ 240VAC MAX
IF COLORTRAN MODEL NO. 4-001XE OR 4-002XE DIMMER MODULES
ARE THE ONLY POWER MODULES INSTALLED. OTHERWISE 10,000A RMS

AT 240 VAC MAX.

TUALATIN, OR Made in the U.S.A. 31509A

LINE LUGS: 2 PER PHASE AND NEUTRAL
SINGLE 1/0 AWG - 600kcmil OR DUAL 1/0 - 4/0 AWG.
1 - GROUND LUG: 6 AWG - 250 kcmil

LOAD TERMINALS: 14 AWG - 2 AWG (SINGLE CONDUCTOR)
GROUND TERMINALS (OPTIONAL): 14 - 4 AWG (2 FOR 14 - 10 AWG)
NOTE: ALL TERMINALS RATED FOR 90°C COPPER ONLY
AT 75°C AMPACITY.

NOTES: UNLESS OTHERWISE SPECIFIED

1. MINIMUM CLEARANCES:
 - A. 12" TO LEFT OF DIMMER RACK FOR DIMMER REMOVAL.
 - B. 12" FROM TOP OF DIMMER RACK FOR AIR EXHAUST.
 2. MATERIAL:
 - A. PANELS (SIDE, REAR, TOP & BOTTOM)
- 16 GAUGE CRS.
 - B. DOOR FRONT - 0.090 ALUMINUM.
 - C. CORNER POSTS - EXTRUDED ALUMINUM.
 - D. MAINFRAME (TOP & BOTTOM)
- 14 GAUGE CRS.
- FINISH:
- C-UL AND UL LISTED FILE E41215.

PROJECT TITLE

인천아트플랫폼
무대조명장치

NOTES

REVISION

DRAWN BY

MECH:

LIGHT:

SOUND:

ELEC:

CHECKED

DESIGNED |

APPROVED

NAME OF DRAWING

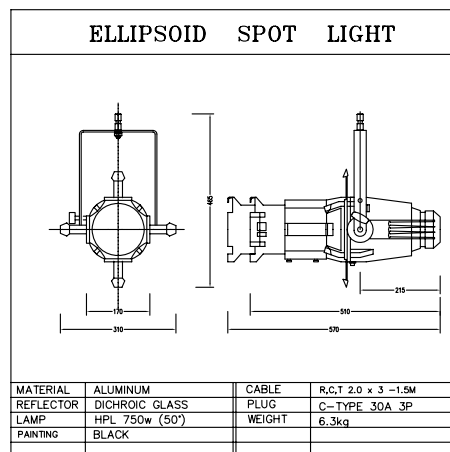
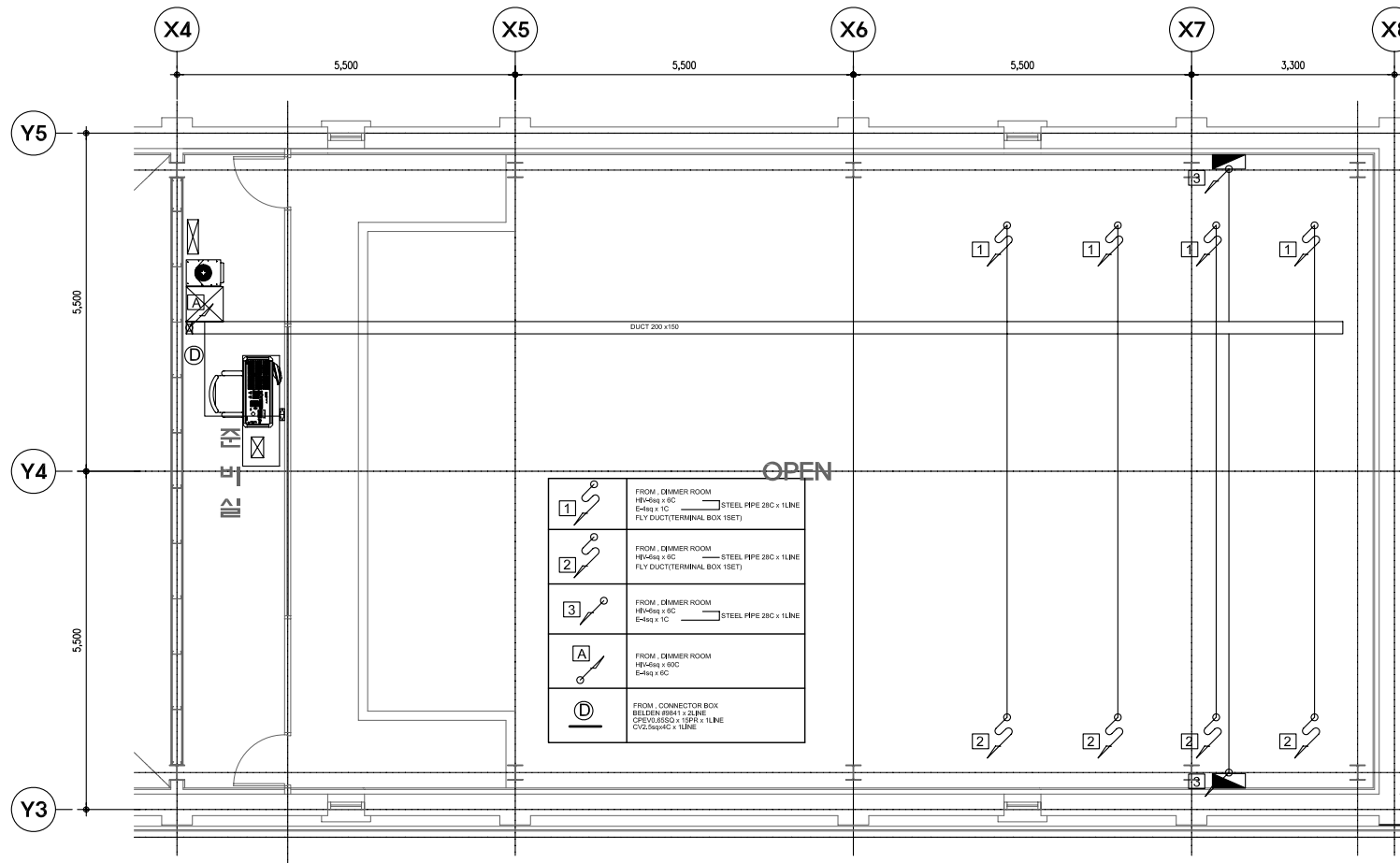
DIMMER UNIT RACK

SOLE 1 / 40

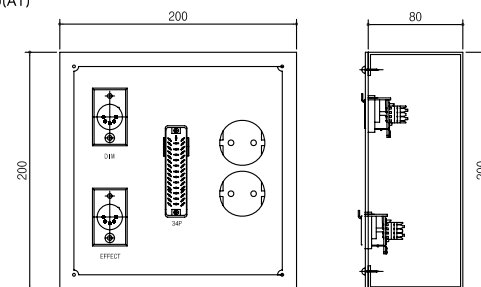
DATE 2009. 05.

DRAWING NO HAN - L - 007

SHEET NO



1 공연장 무대장치 배관배선
A 000 1/40(A1)



CONNECTOR BOX

PROJECT TITLE
인천아트플랫폼
무대조명장치

NOTES

REVISION

DRAWN BY
MECH:
LIGHT:
SOUND:
ELEC:
CHECKED BY
DESIGNED BY
APPROVED BY

NAME OF DRAWING
공연장 무대장치 배관배선
SCALE 1 / 40 DATE 2009. 05.

DRAWING NO HAN - L - 008
SHEET NO